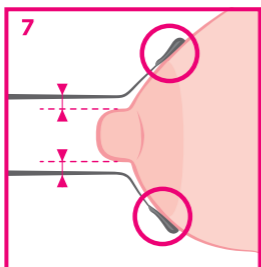
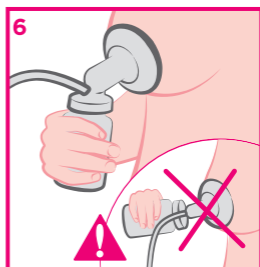
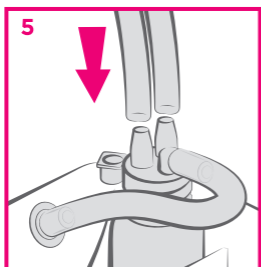
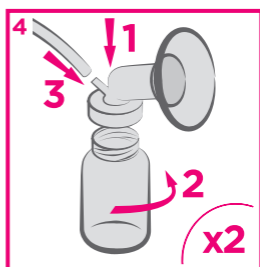
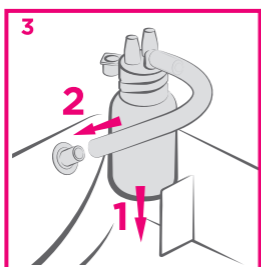
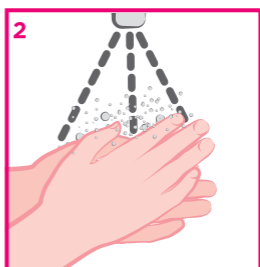
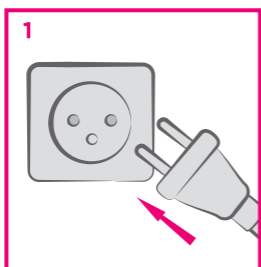


kitett[®]

FISIO

Электрический
МОЛОКООТСОС

Tire-lait électrique
Electric breastpump
Elektrische Milchpumpe
Sacaleche eléctrico
Bomba tira leite elétrica



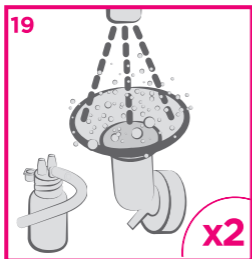
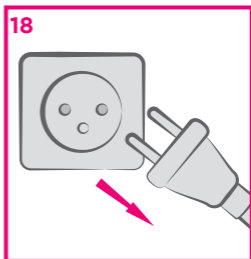
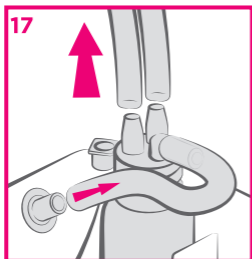
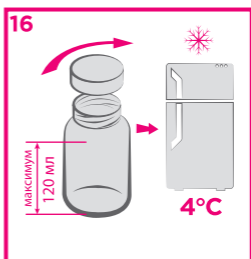
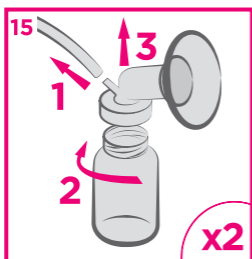
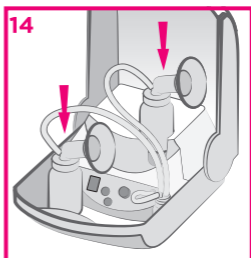
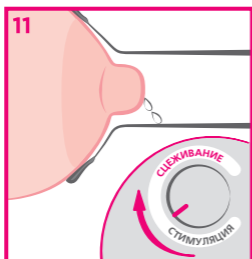
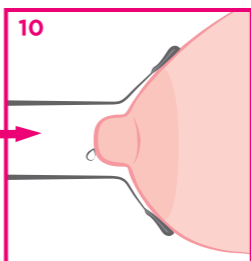
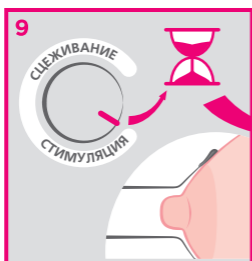
Изготовитель: Diffusion Technique Française -
DTF Medical, 19, rue de la Presse, CS 60132,
42003 Saint-Etienne Cedex 1 - France, www.dtf.fr



УПОЛНОМОЧЕННЫЙ ПРЕДСТАВИТЕЛЬ:

в Беларуси: ООО «БиоЛайн-БС»,
Республика Беларусь, 220123,
г. Минск, ул. В. Хоружей, 32 а
тел. / факс + 375 17 399-43-79

DTF[®]
medical



K.NU.MU.001.0215